

Ovation 28 Advance and Mini/Maxi Advance Classroom Packs

Whether you are interested in hatching a few eggs in the classroom or wishing to teach your students more advanced aspects of incubation and embryology Brinsea has the right package for you.

The Mini II Advance or the Maxi II Advance Classroom Packs feature:

An Advance incubator with fully automatic egg turning and autostop feature.

The **Mini II Advance** offers capacity for 7 hen eggs or 12 smaller eggs with optional small egg disk. The **Maxi II Advance** offers capacity for 14 hen eggs or 40 smaller eggs with optional small disk.



The Ovation 28 Advance Classroom Pack features:

An Ovation 28 Advance incubator with fully automatic egg turning (capacity approx.28 hen eggs).



All Packs contain:

- 'The Egg Story' Lesson Plan Manual on CD-ROM
- Preset temperature ● Easy to use menu driven controls
- Digital display of temperature and turning status
- Cordless OvaScope egg scope to watch the live embryo develop inside the egg
- EcoGlow chick brooder ● Plastic chick enclosure ● Feeder ● Drinker
- Full operating & troubleshooting instructions

Plus FREE...

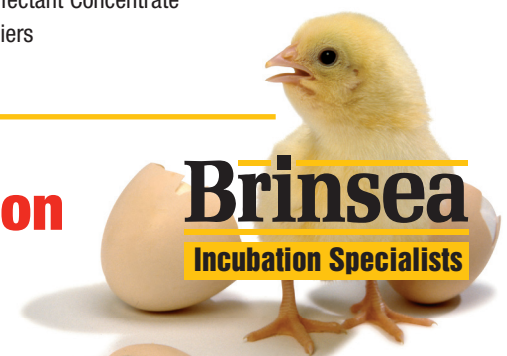
- Brinsea Incubation Disinfectant Concentrate
- List of fertile eggs suppliers
- 3 year warranty



Watch your eggs hatch every time

Taking the guesswork out of incubation

www.brinsea.com

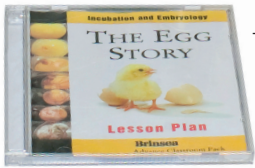


Brinsea
Incubation Specialists

Ovation 28 Advance and Mini/Maxi Advance Classroom Packs

The **Mini II Advance** or **Maxi II Advance** packages are perfect for affordably and reliably hatching a small number of eggs and introducing the wonders of life to younger students whilst the **Ovation 28 Advance** package is better suited for educators interested in teaching older students more advanced aspects of incubation and embryology.

All packs provide all the equipment you will need (including full operating and troubleshooting instructions) and a detailed Lesson Plan manual on CD-Rom.



The **Egg Story Lesson Plan** A 50-page color manual has been designed to simplify the educator's task. Crammed with fun hands-on activities and color photographs of developing embryos it is great for creating students interest and a comprehensive source of information for the teacher. The perfect companion of a hands-on experience of incubation "The Egg Story" manual shows how an egg is formed, what its different parts and functions are and how a chick embryo develops and hatches. It also gives an insight into particular biological topics such as blood circulation, respiration and how bones are different in birds.

Students will develop observation and record keeping skills, make and use measurements. They will acquire biological vocabulary and an understanding of physical development, structure and function of the body. Further useful resources have been included at the end of the manual to consolidate the embryology project but also enhance programs in nutrition and mathematics for instance.

Particularly suited to middle school science projects, the lesson plans are flexible and can easily be tailored to younger students needs.

Watch the live embryo develop inside the egg



The **OvaScope** is an innovative aid to egg candling. It improves the clarity and visibility of the egg and its contents by completely blocking out ambient light, slightly magnifying the image of the egg, and allowing the viewer to rotate the egg smoothly as it is observed. Battery powered for convenience (4 AA batteries included) it uses high output high efficiency LED illumination – so no bulbs to replace and no concerns about over-heating the eggs during inspection – even small eggs such as quail. The OvaScope can be fitted with a webcam and is ideal for demonstration purposes or classroom use.



The **Mini II Advance** and **Maxi II Advance incubators** provide automatic egg turning with autostop 2 days prior to hatching, countdown to date-of-hatch so you'll always know the status of your hatch. Eggs are turned by rotating egg disks: one for hen or duck eggs supplied as standard or one for smaller eggs up to pheasant size available as an optional extra. The clear walls of the egg chamber mean fantastic visibility of the hatching eggs without lifting the dome.

The **Ovation 28 Advance** also comes with automatic egg turning with eggs held in tilting egg carriers making it ideal for more advanced embryology projects with petri dishes or windowed eggs. The incubator can accommodate any egg size up to duck with the standard egg carriers supplied. For bigger eggs large egg carriers are available as an optional extra. Like its smaller brothers, the clear lid offers excellent visibility without opening the incubator.

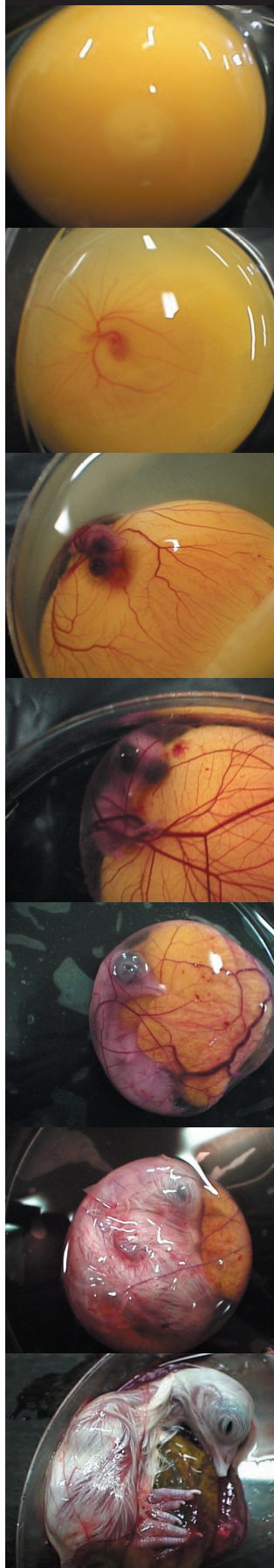


Advance Control System



On all incubators the digital microcontroller allows you to manage all the functions via a simple menu on the digital display.

In normal operation the Mini II Advance and Maxi II Advance display shows incubation temperature, days to hatch and turning status whilst the Ovation 28 Advance displays incubation temperature, humidity and turning status. The incubation temperature is preset on all incubators but opening the menu allows you to adjust the set temperature, the unit (°C or °F), high and low temperature alarms and much more.



The Brinsea Mini II Advance, Maxi II Advance and Ovation 28 Advance incubators are designed to use for the education of children although they are not toys and should be used only under adult supervision.

In order that we continue our policy of innovation and improvement we reserve the right to alter the specification without notice.

For full details of the products contained within the Classroom Packs, please contact your dealer or:

Brinsea Products Inc

704 N. Dixie Ave., Titusville, FL 32796 Toll free 1 888 667 7009 or (321) 267 7009 Fax: (321) 267 6090
www.brinsea.com or e-mail sales@brinsea.com