

## OVATION 28 EGG INCUBATORS – CLEANING / SERVICE GUIDE



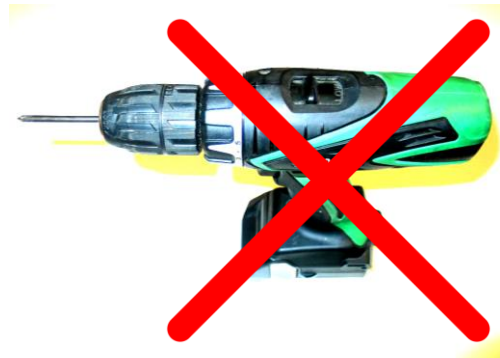
**Danger**  
Electric shock risk

### ISOLATE SUPPLY BEFORE REMOVING COVER.

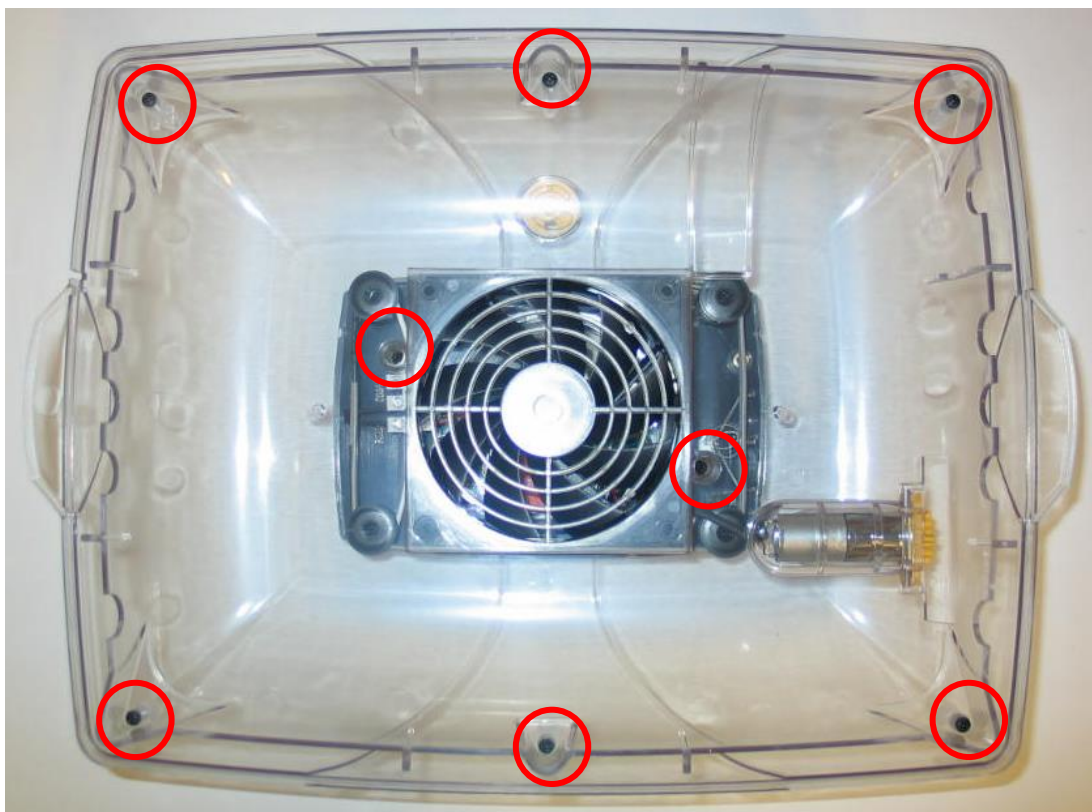
The heating wire, thermal fuse and associated terminals are supplied at high voltage. Disconnect the power cable from the incubator before removing any parts.

This cleaning operation must only be carried out by a suitably qualified and competent person. There is a risk of fire, personal injury or electric shock if not carried out correctly. Disconnect the appliance from the mains supply before removing any cover. Always replace the cover before applying power. Brinsea Products Inc. shall not be liable for any loss or injury incurred as a result of incorrect servicing or fitment of replacement parts. If in any doubt contact your local Brinsea stockist or Brinsea Products Inc. at the address at the end of this document.

1. Read and understand this guide in full before cleaning / servicing the appliance.
2. Disconnect the power cord from the incubator. Do not allow it to get wet.
3. Only use well-fitting hand tools – power tools may cause damage to threads in plastic parts!



4. Place incubator top upside down and remove 8 screws to release the inner lid:



5. Clean the inner lid with a cloth made damp with correctly diluted incubator disinfectant solution. Once clean, wipe off the disinfectant with a cloth made damp with clean water.

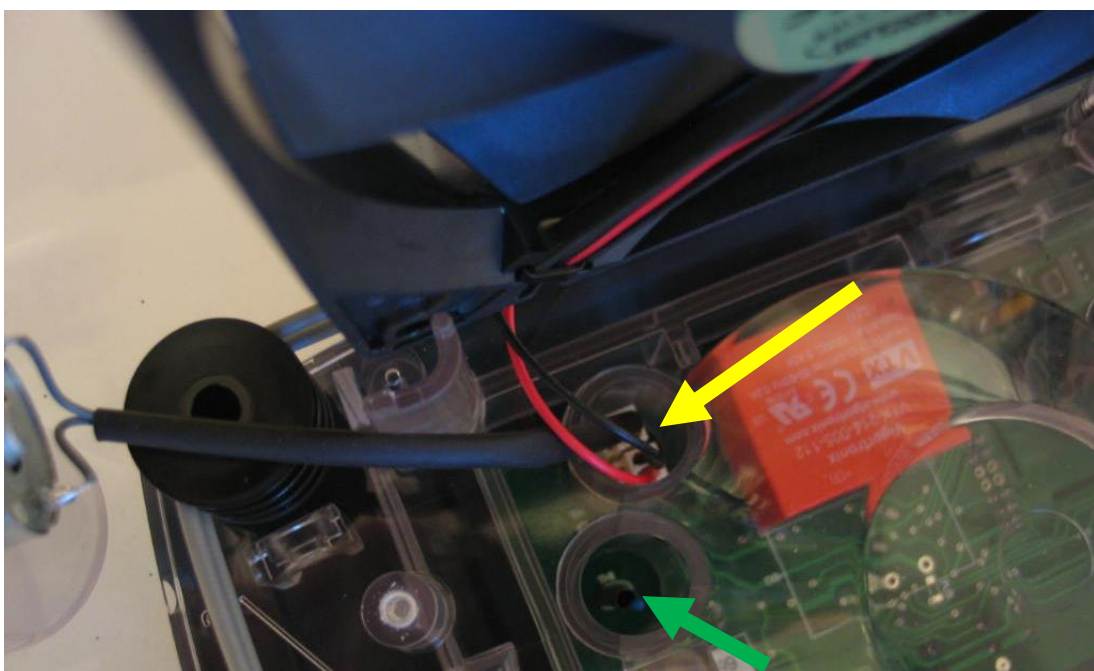


6. The fan and the egg turning motor may be lifted from their locations in the incubator lid.

**Do not allow the wires or connectors (yellow arrow in picture) to be strained.**

**Only remove the fan or the egg turning motor if necessary. Take notice of how they are located to ensure correct replacement (also see sections 11-13). The connectors may be separated by pulling gently on both wires in a vertical direction.**

**Do not touch the temperature sensor (green arrow, sensor detail may vary by model).**



7. The fan may be cleaned using a soft brush and a vacuum cleaner.



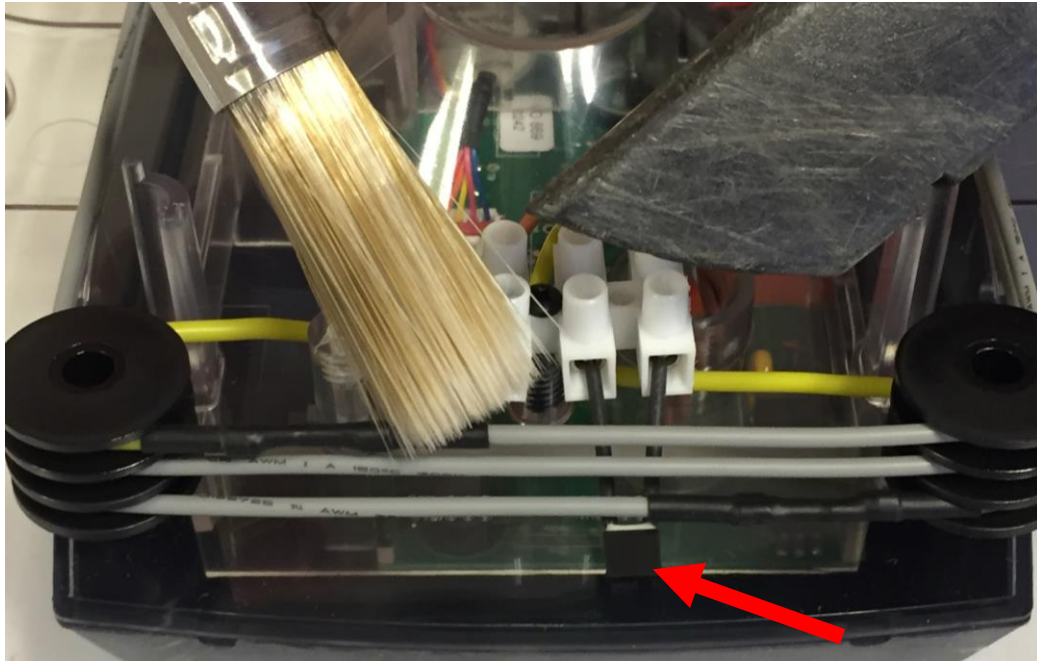
8. The egg turning motor may be cleaned with a cloth made damp with correctly diluted incubator disinfectant solution. Once clean, wipe off the disinfectant with a cloth made damp with clean water. Do not allow the motor to become wet.



9. The heating element may be cleaned using a soft brush and a vacuum cleaner.

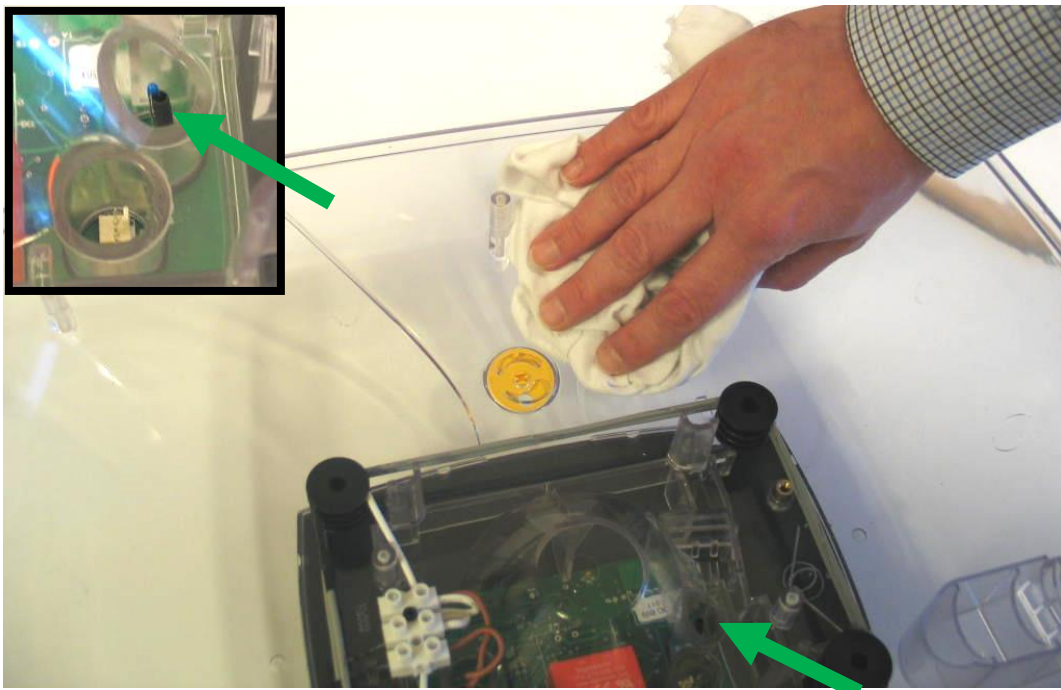
**Use no liquids.**

**Do not disturb the thermal fuse (red arrow).**



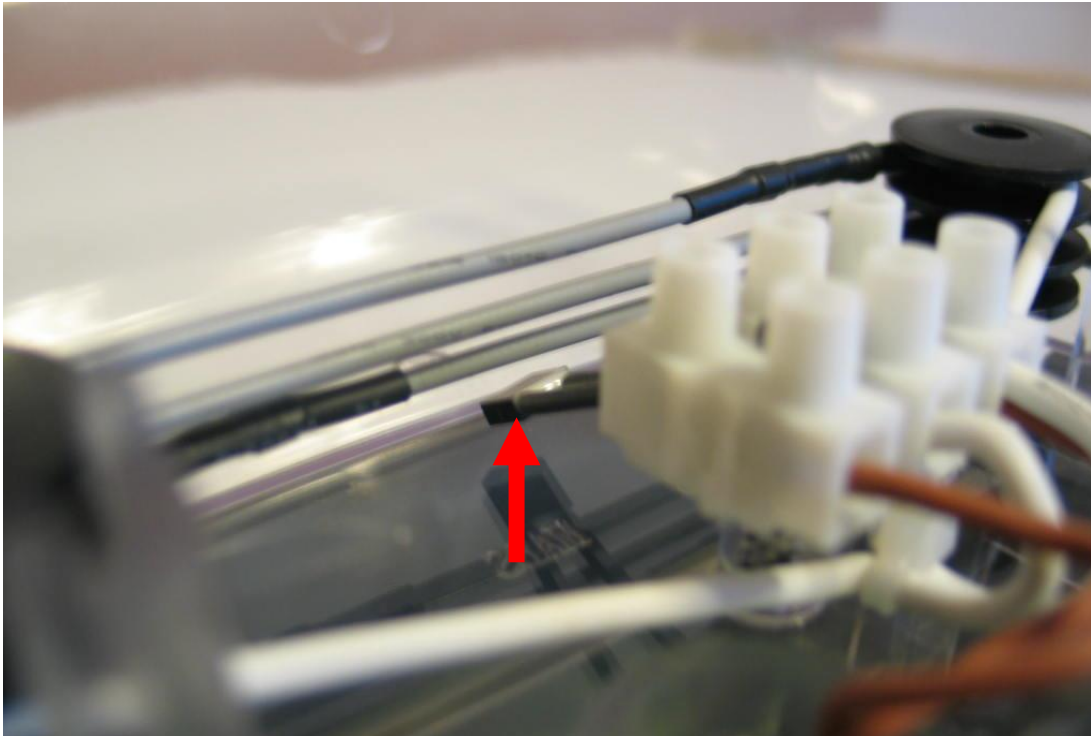
10. The inside surface of the incubator lid may be cleaned with a cloth made damp with correctly diluted incubator disinfectant solution. Once clean, wipe off the disinfectant with a cloth made damp with clean water.

**Do not touch the temperature sensor (green arrow, sensor detail may vary by model).  
Fluids / moisture may destroy the sensor.**

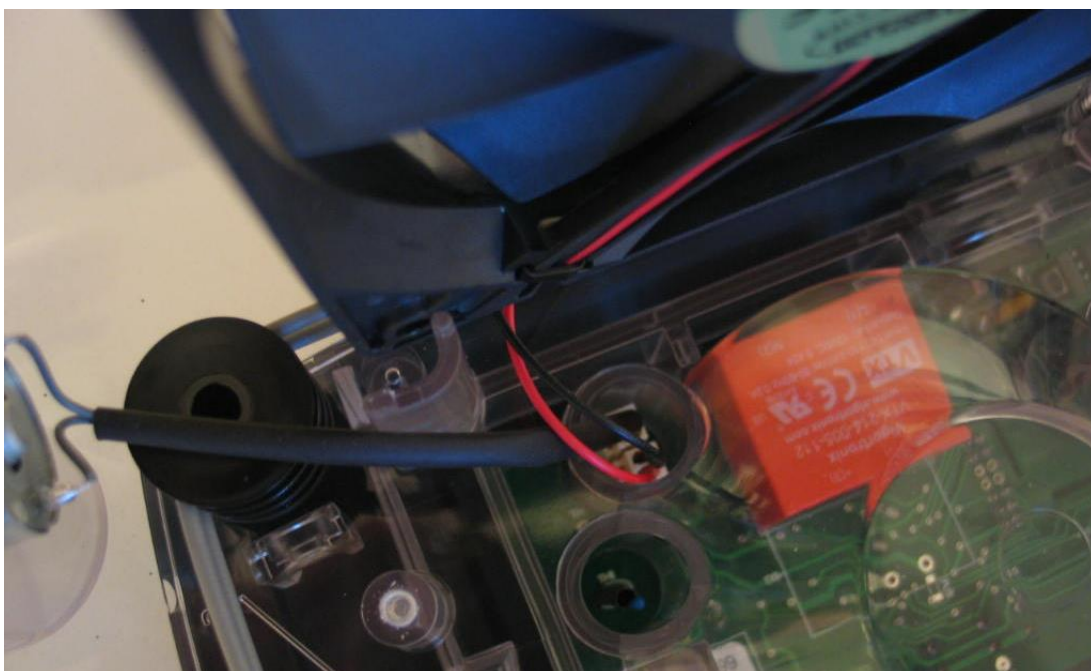


11. Once the cleaning service is complete ensure the thermal fuse is still located directly above the heating element but not touching it.

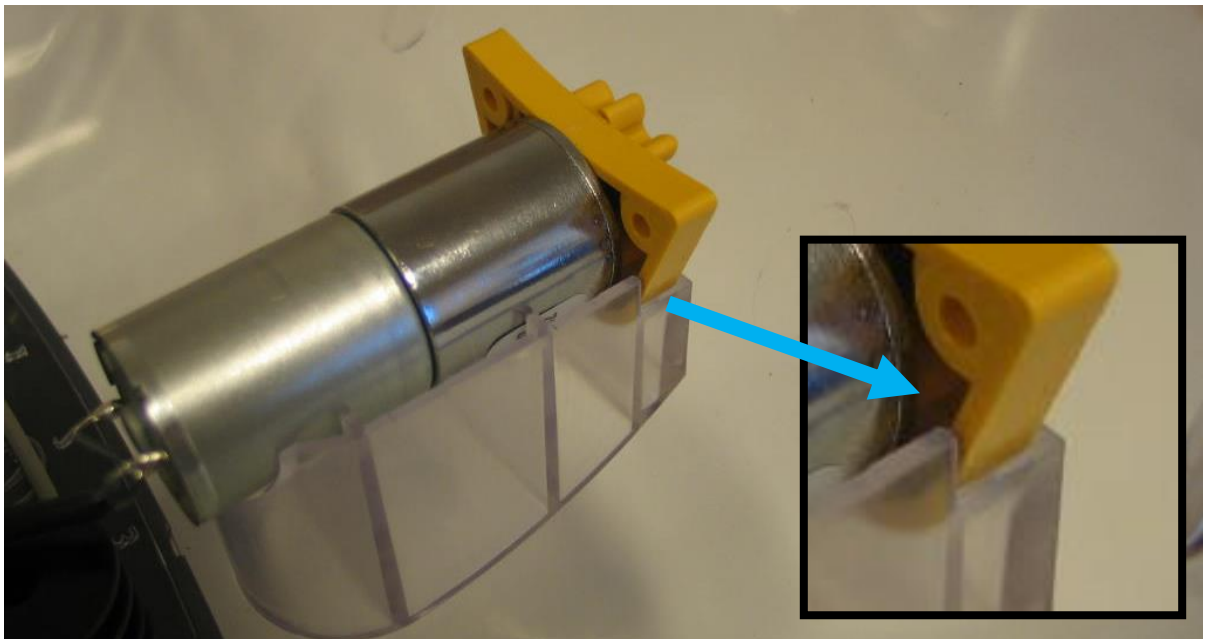
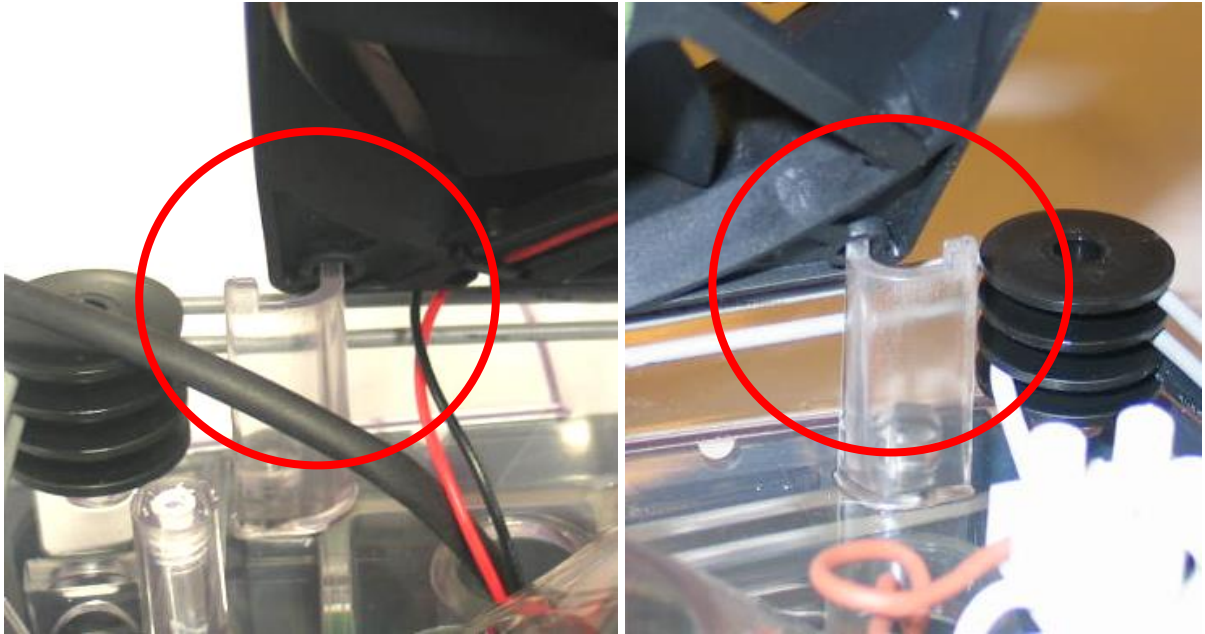
**The ongoing safety of the appliance relies on the correct location of the thermal fuse.**



12. Ensure the fan and egg turning motor connectors are fitted in the correct locations and pushed fully home. Hold the fan in the position shown to enable the connectors to be pushed into place. Note the path of the egg turning motor wire. The connectors may be pushed fully into place with the aid of a small screwdriver.



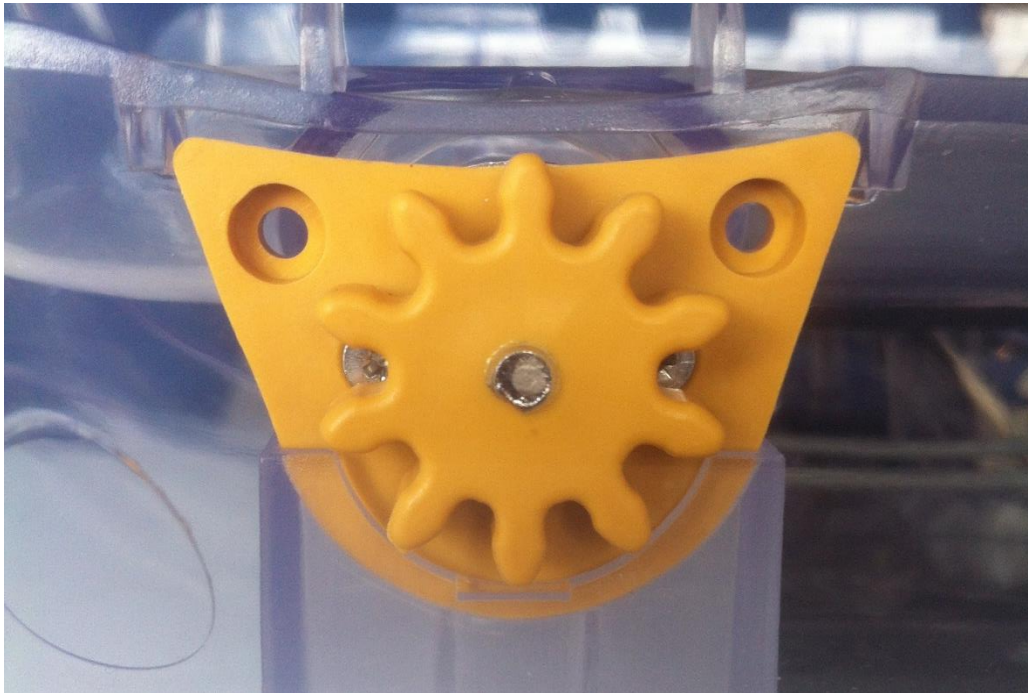
13. Ensure the fan is evenly located on its 4 posts and the egg turning motor is located in the socket in the incubator top moulding.



14. Refit the inner top and fasten with the 8 screws.

**Do not over tighten. Ensure the screwdriver is a good fit. Do not use power tools.**

**Ensure the yellow cap of the egg turning motor is held in the mouldings as shown below:**



15. The incubator base, water pan covers, egg carriers and carrier link parts may all be washed in warm soapy water before wiping with incubator disinfectant solution and then rinsing.

**Ensure all parts are completely dry before storage, failure to do so may result in damage that will not be covered in the manufacturer's guarantee.**

**If in any doubt contact your local Brinsea stockist or Brinsea Products Inc.**

Brinsea Products Inc., 704 N Dixie Ave., Titusville, FL 32796-2017 USA.

Phone (321) 267-7009

Toll Free 1-888-667-7009

Fax (321) 267-6090

e-mail [sales@brinsea.com](mailto:sales@brinsea.com)

website [www.brinsea.com](http://www.brinsea.com)